

# How to start an FJC...



**Good practices from FJC Limburg**



**Limburg**

# Domestic violence requires a specific approach

- Common and under-reported problem
- A lot of deadly and other victims
- Complex and dangerous dynamics
- Those involved often stay in each other's environment (parents, family)
- Devastating impact on children -> intergenerational transfer
- Great social cost
- Gaps in interventions, approach and expertise
- Many services involved -> transcends policy domains, policy levels and competencies

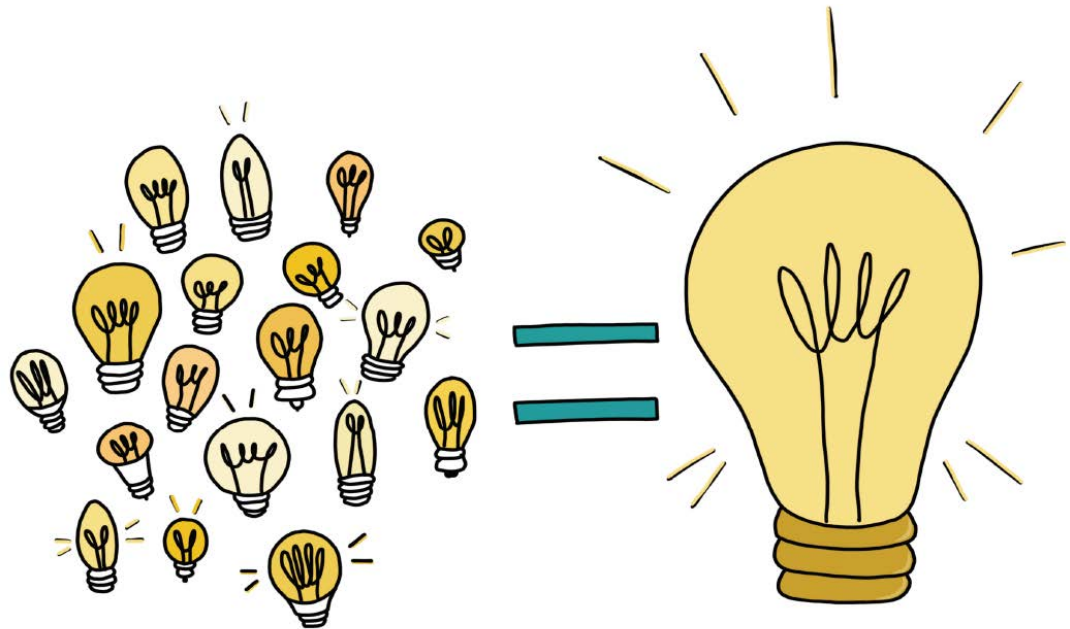


Vlaanderen  
is zorgzaam samenleven

**We need to  
improve our  
approach**

# Need for a paradigm shift

- We are not doing well enough yet ...
- We need to work together more and smarter
- The approach to domestic violence must become a real policy priority





Vlaanderen  
is zorgzaam samenleven

**How are we  
doing that  
in Limburg?**

# Before 2004



**Vlaanderen**  
is zorgzaam samenleven

# 2004



**Vlaanderen**  
is zorgzaam samenleven



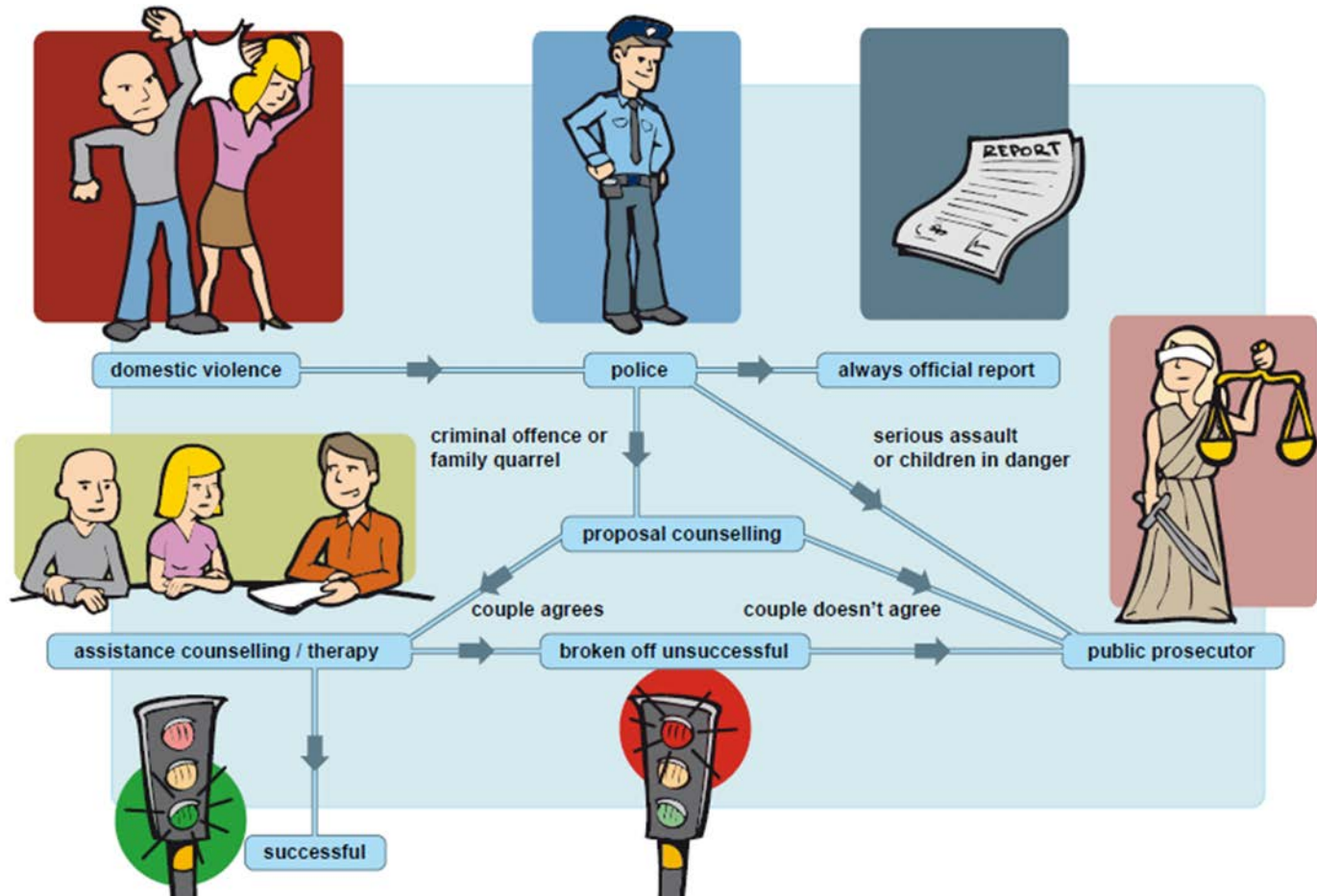
# Between 2004-2006



- 1 co-ordinator (province of Limburg)
- Partners: police, justice, social work, municipalities, university, ...



# Since 2006: referral route



# Since 2013: chain approach in complex & high risk DV cases



**LINK**

Limburgse Intrafamiliaal geweld Keten



**Vlaanderen**  
is zorgzaam samenleven

# Want to know more?

## Book & blended training

- ▶ Collaborating in a chain
  - What is chain collaboration?
  - Implementing a chain approach
  - The designed chain approach
  - What does a chain approach deliver in practice?



Download via [www.formachain.eu](http://www.formachain.eu)



**Vlaanderen**  
is zorgzaam samenleven

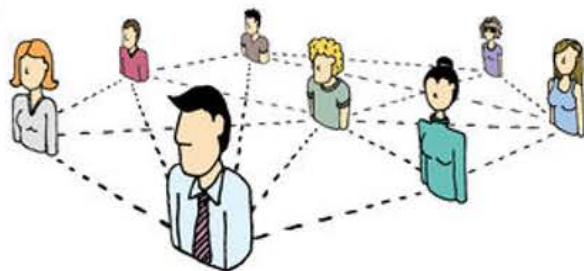
**2015: towards a Limburg FJC**

# What was our strategy?

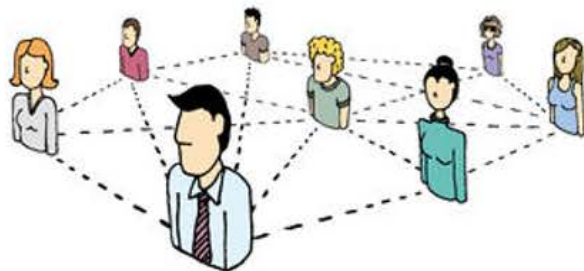


# Step 1: focus groups + visit regions with good practices

1



4 focus groups with victims  
+ 2 with perpetrators



4 focus groups with organisations



**What do victims / offenders / families  
experience? What is going well?  
How can we improve?**



**What are the expectations of the  
organizations involved?**



# Being inspired by good practices

**Malmö (SE)**



**Tilburg (NL)**



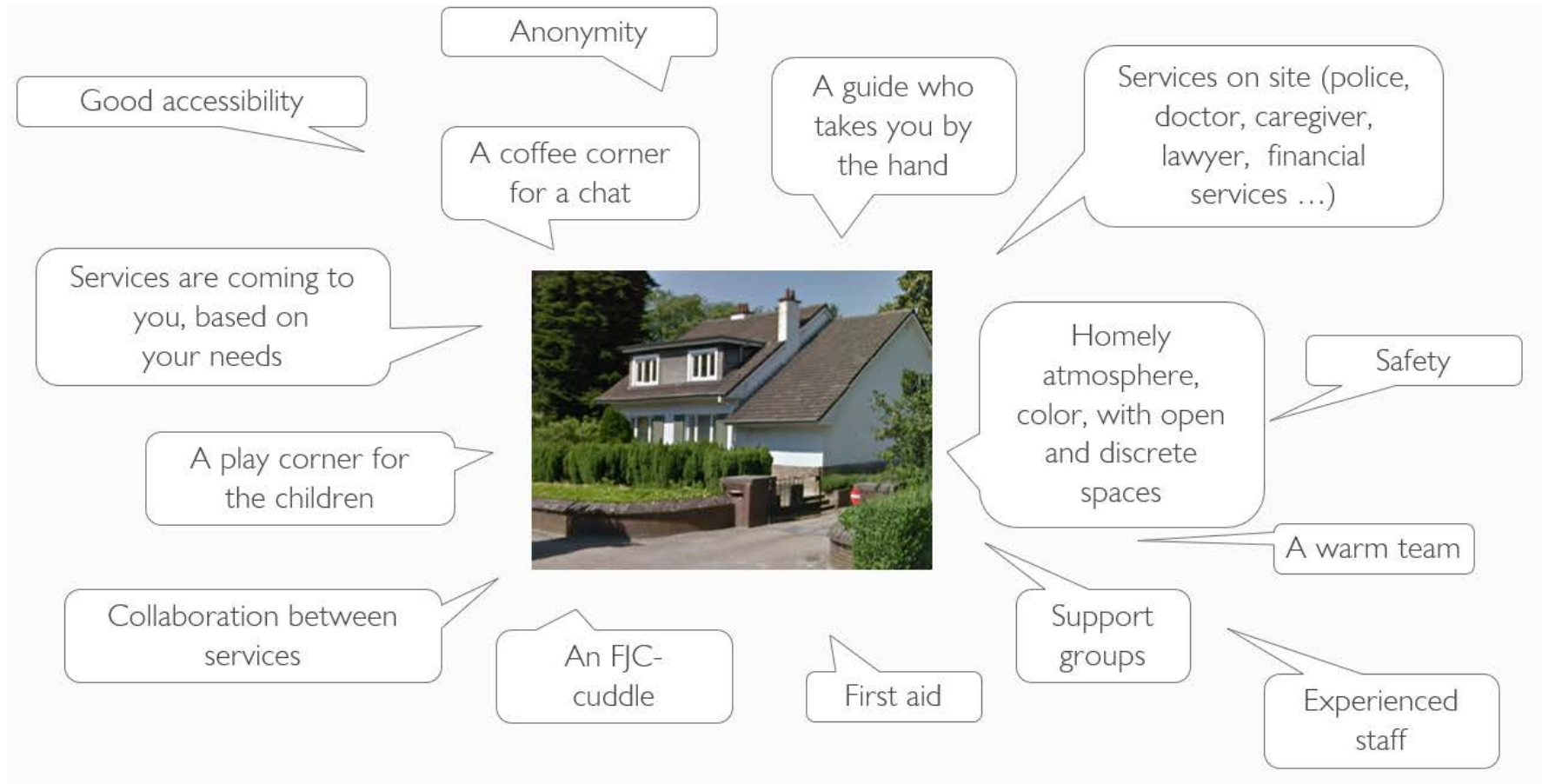
**New Orleans (USA)**



**Antwerp (BE)**



# What does the ideal FJC look & feel like?



# Step 2: a charter

2



**Vlaanderen**  
is zorgzaam samenleven

# Guidelines charter

- Safety comes first
- Coordinated, high-quality and efficient approach
- Integrated approach
- Multidisciplinary team
- Under one roof
- Information sharing -> legal framework + respect deontological guidelines
- Risk assessment and triage of files
- Systemic -> one family, one plan
- Client-centered
- Child perspective
- Broad spectrum: prevention -> repression
- Expertise center

# 3

## Step 3: strategic framework

(location, financial means, team, interventions, ...)



# 4

## Step 4: operationalizing

(process, sharing of info, ICT, intake, route in & out...)



5

## Step 5: start FJC Limburg





Vlaanderen  
is zorgzaam samenleven

# 10 lessons learned during the start-up of FJC Limburg



1. Put together a **strong project team**.  
A team with expertise and good relationships with partners. That creates trust.

2. Make sure you are not working out an approach from within your Ivory tower. **Involve** the **people** for whom you're doing it.

**3. Visit an operational FJC.** Also ask about the stumbling blocks and the challenges. Bear in mind that such an approach cannot just be copied. See it as a source of **inspiration** that you can translate into your local context and needs.

**4. Take small steps** and celebrate your successes in the course of the process.

That provides energy to take the following steps. Also dare to acknowledge that it is not obvious to anyone, that it is a **process that requires courage.**

5. "Dream big, start small, but most of all start." **Ambition is very good, but don't go too fast for yourself and your partners.** Rather start a little more modestly, instead of building a large but empty box. Make sure you can meet expectations and go for real change.

6. Make sure that the project team does not want to do everything itself. It is a process in which the **participating organizations must take responsibility** and must be given a mandate. In this way you increase support and share responsibility.

**7.** Take into account the fact that **certain mechanisms play a role in organizations.** Despite the enthusiasm present, it will not always be obvious to convince partners to invest. Be aware of this when your patience is put to the test, but certainly **do not give up.**

8. At a certain moment you have to go **from "talk about" to "do"**.

This requires courage. Don't forget to give recognition for that.



**9. Involve researchers** in the process to demonstrate the results and the added value. This is necessary to go beyond the pilot phase and to go to a structural implementation.

**10.** Do not separate the process towards the FJC from other social developments. Change does not happen under a glass dome. Stick out your feelers for **all kinds of relevant developments**. That way you can constantly monitor and adjust the process.



Vlaanderen  
is zorgzaam samenleven

# About FJC Limburg

# “Take the best of what you already have and bring it all together”



**Vlaanderen**  
is zorgzaam samenleven



**Vlaanderen**  
is zorgzaam samenleven

# Ambitions of FJC Limburg

- Sustainable safety for the whole family
- Pro-active & low-threshold aid offer
- Preventing violence and gaining a clearer picture of it

# Which files come to FJC Limburg?

- Complex files with multiple problems + coordinated approach between welfare, police and justice needed
  - ➔ **from: all Limburg professionals = 1 %**
- All police reports domestic violence
  - ➔ **from: 2 police regions -> 330.000 inh. = 99 %**

**Step 1:**  
**police intervention**



+



**Step 2:**  
**police and public  
prosecutor make a  
DV-file**



+



**Step 3:**  
**risk assessment  
& triage**



+





**Step 4:**  
**multi-disciplinary**  
**alignment**



**Step 5:**  
**dialogue with clients**  
**& organize help**  
(whether or not in  
combination with criminal  
law)



+



**Step 6:**  
**follow-up**



# Organizing help for the entire client system =

- DV intake
- Create safety plan & plan of approach
- Use regular assistance & link to ongoing processes
- Case management
- Intensive case management (after temporary barring order)

# Temporary barring order



- +/- 100 a year in Limburg
- 7 intensive case managers
- Goal = use the crisis to achieve change
- 10 days of very intensive follow-up -> 1 year of follow-up



# Overview after 2 years

QUALIFICATION	TOTAL
<i>To be defined</i>	111
<i>Green</i>	1096 (46 %)
<i>Orange</i>	742 (31 %)
<i>Red</i>	403 (17 %)
<i>Temporary barring order</i>	109 (4,5 %)
<i>Chain approach</i>	37 (1,5 %)
<b>TOTAL</b>	<b>2498 families</b>

# Added value

## Under 1 roof

### Swift approach



### Pro-active approach



### Alignment



### Tailor-made approach



### Prevention of re-offending



# Challenges

## Roll-out across Limburg



## Broader influx

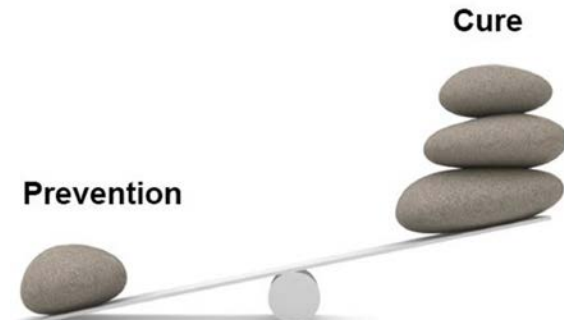


**Vlaanderen**  
is zorgzaam samenleven

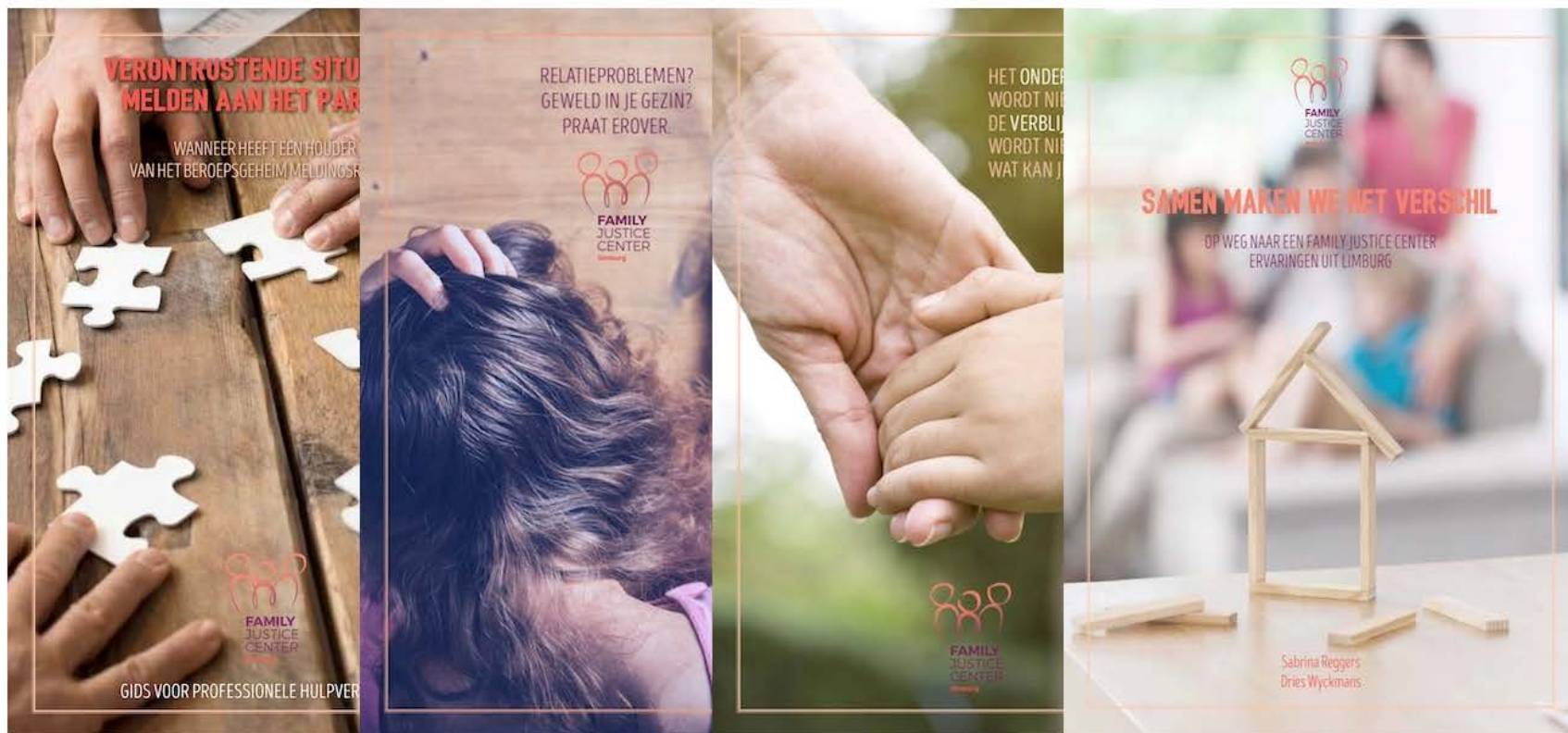
## Structural funding



## Prevention of violence



# More info on [www.fjclimburg.be](http://www.fjclimburg.be)



# Location Hasselt



[www.fjclimburg.be](http://www.fjclimburg.be)



# Location Genk



[www.fjclimburg.be](http://www.fjclimburg.be)



**Vlaanderen**  
is zorgzaam samenleven



**Vlaanderen**  
is zorgzaam samenleven

# Contact

**Dries Wyckmans**

**T. +32 470 19 48 28**

**[dries.wyckmans@wvg.vlaanderen.be](mailto:dries.wyckmans@wvg.vlaanderen.be)**

**[www.fjclimburg.be](http://www.fjclimburg.be)**

**DEPARTEMENT WELZIJN VOLKSGEZONDHEID EN GEZIN**

**Afdeling Justitiehuisen**